

FEATURES AND SPECIFICATIONS

Features and Benefits

- Low profile: 4.30mm (.169") height
- Single inline surface mount tails: 0.635mm (.025") pitch
- Long guide rail for longer lead in to the mating interface
- Polarization key prevents CF Card mis-insertion
- Dual row 1.27mm (.050") pitch at card interface
- Solder pads near connector front prevent rocking of assembly during mating and unmating

Reference Information

Product Specification: PS-67155

Packaging: Tray

Mates With: [67003](#), [67114](#) or industry standard interface

Designed In: Millimeters

Electrical

Voltage: 100V

Current: 0.5A

Contact Resistance: 40mΩ max.

Dielectric Withstanding Voltage: 500V AC/1 min.

Insulation Resistance: 1000 MΩ min.

Mechanical

Contact Retention to Housing: 9.8N min.

Mating Force: 28.8N max.

Unmating Force: 4.9N min.

Durability: 10,000 cycles

Physical

Housing: White Glass-filled LCP, UL 94V-0

Contact: Phosphor Bronze

Plating: Contact Area—Gold over Palladium Nickel

Solder Tail Area—Tin/Lead

Solder Tab Area—Brass, Tin/Lead over Copper plating

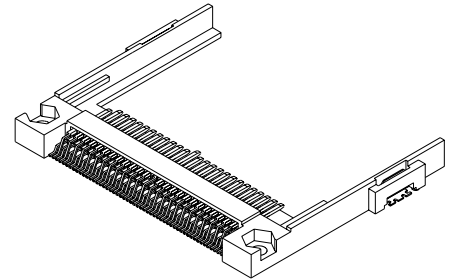
Underplating—Nickel

Operating Temperature: -20 to +90°C

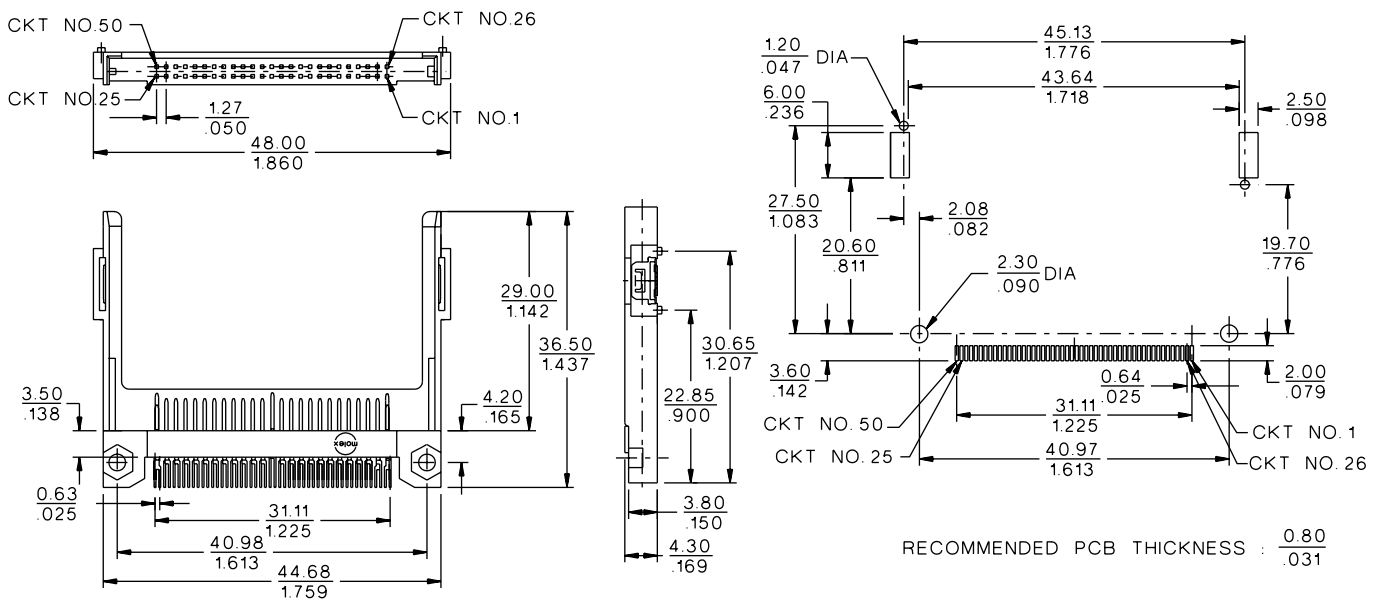
molex® 1.27mm (.050") Pitch CF Card Header

67155

Low Profile, Right Angle, SMT Top Mount For Type I and Type II Cards



CATALOG DRAWING (FOR REFERENCE ONLY)



ORDERING INFORMATION

Circuits	Order No.
50	67155-0002